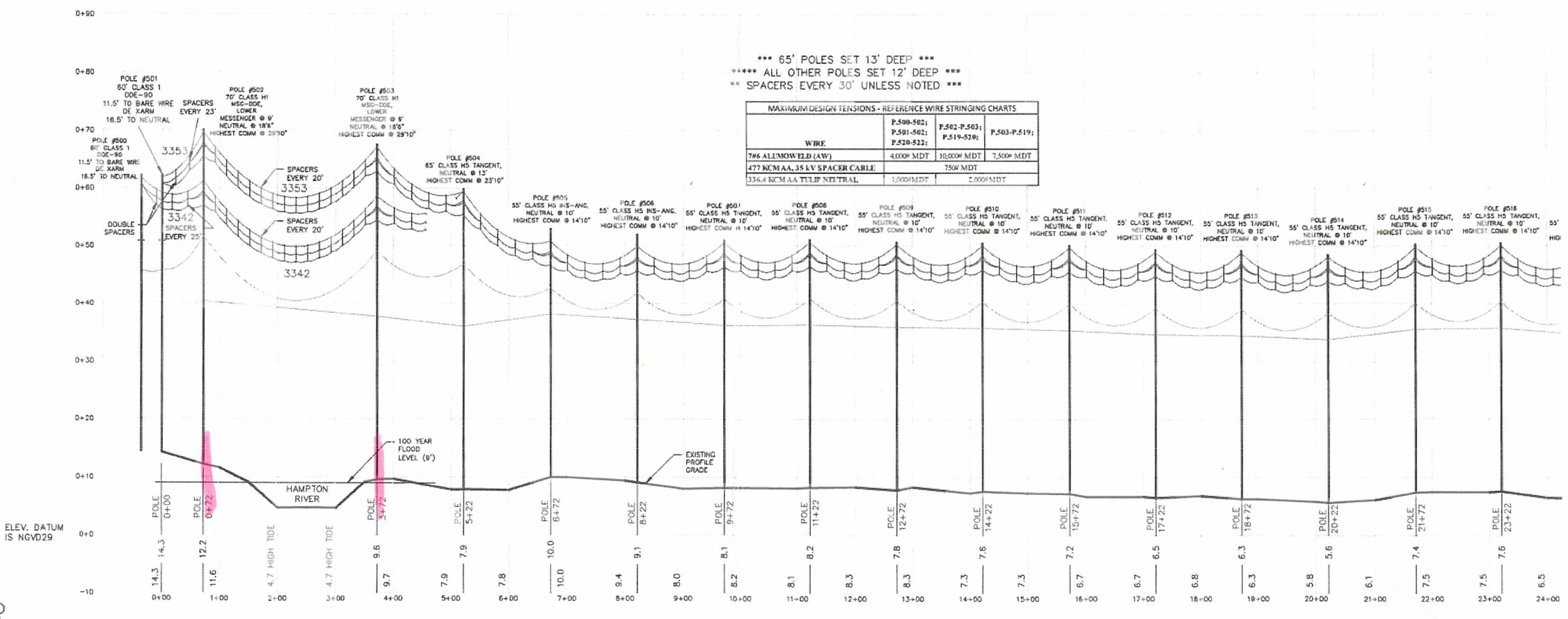
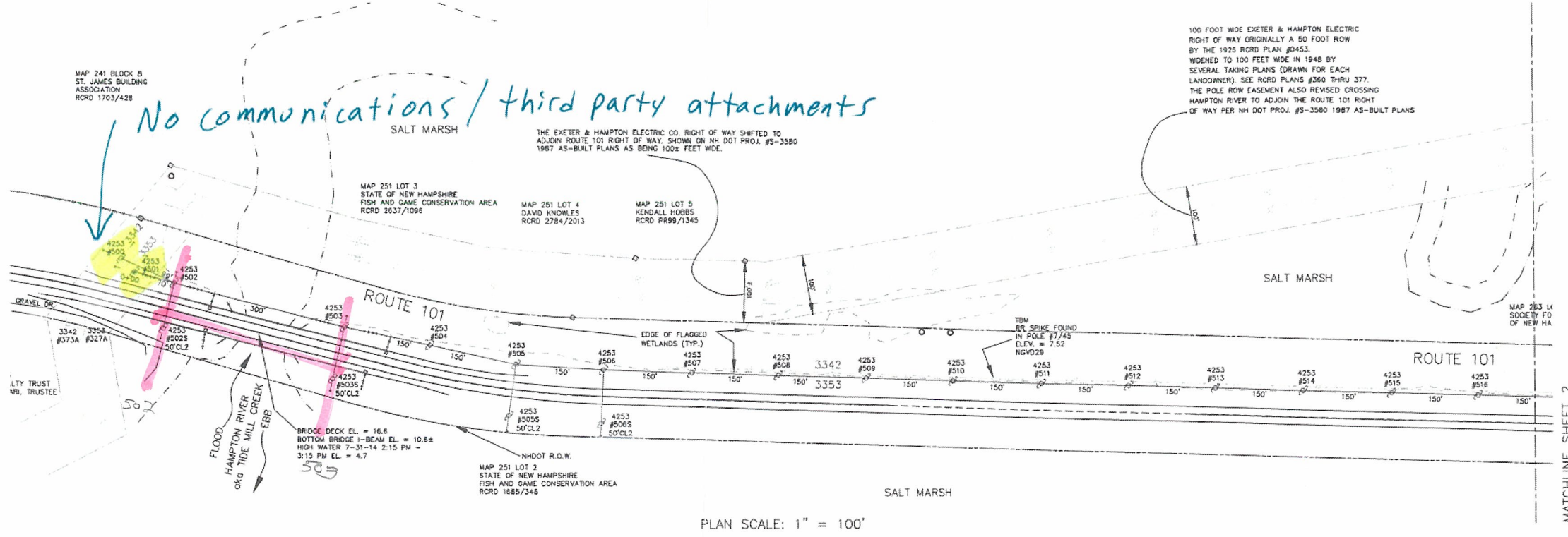
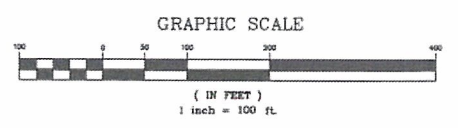


Map data ©2015 Google 200 ft

- LEGEND**
- PROPOSED ELEC CENTERLINE
 - PROPOSED UTILITY POLE
 - PROPOSED GUY ANCHOR
 - PROPOSED PUSH BRACE POLE
 - EDGE OF EXISTING EASEMENT
 - EXISTING PROPERTY LINE
 - TOP EDGE OF CREEK
 - METAL GUARD RAIL
 - APPROX. SEWER LOCATION
 - DRAIN PIPE
 - APPROX. WATER LINE LOCATION
 - TELEPHONE CABLE JUNCTION BOX
 - APPROX. UNDERGROUND TELEPHONE
 - WOOD FENCE
 - OVERHEAD TELEPHONE
 - CHAIN LINK FENCE
 - ROCKINGHAM COUNTY REGISTRY OF DEEDS
 - ROAD
 - WIRE OR ROPE OR CHAIN FENCE
 - EXISTING UTILITY POLE
 - WATER SHUT OFF
 - SEWER MANHOLE
 - BELL MANHOLE
 - GAS METER VALVE AT HOUSE
 - IRON PIN OR PIPE LOT LINE MONUMENT
 - ROAD SIGN
 - CATCH BASIN
 - N.H. HIGHWAY BOUND (CONCRETE)
 - DRILL HOLE MARK
 - EDGE OF PAVEMENT
 - EDGE OF GRAVEL DRIVE
 - EDGE OF FLAGGED WETLANDS
 - FLASHING YELLOW LIGHTS
 - DOUBLE YELLOW LINE
 - PAINTED WHITE LINE
 - PAINTED YELLOW LINE
 - HYDRANT
 - GRANITE OR BITUMINOUS CURB
 - SALT MARSH WETLAND SYMBOL
 - NEW HAMPSHIRE HIGHWAY BOUND
 - BENCH MARK
 - NHDOT R.O.W.



ISSUED FOR
 STAGE 1
 CONSTRUCTION
 03/02/2015



PROFILE SCALE:
 VERT: 1" = 10'
 HOR: 1" = 100'

PLAN & PROFILE SURVEYED BY Knight Hill Land Surveying Services, Inc., 2014

DRAWN NS			3342 & 3353 LINE PLAN & PROFILE RELOCATION ALONG RT. 101													
CHECKED AZ			SCALE 1" = 100'	DATE 05/07/14	SHEET 1 of 2											
APPROVED AZ			DRAWING NO. EDT42P06													
<table border="1"> <thead> <tr> <th>REV</th> <th>DESCRIPTION</th> <th>BY</th> <th>DATE</th> <th>CHK</th> <th>APR</th> </tr> </thead> <tbody> <tr> <td colspan="6">REVISIONS</td> </tr> </tbody> </table>					REV	DESCRIPTION	BY	DATE	CHK	APR	REVISIONS					
REV	DESCRIPTION	BY	DATE	CHK	APR											
REVISIONS																